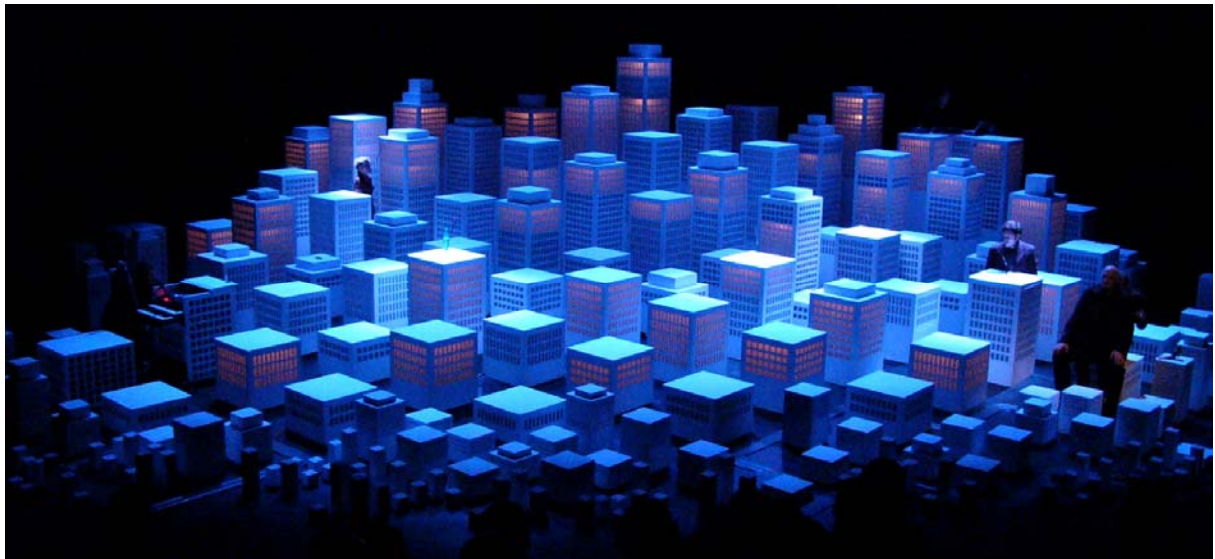
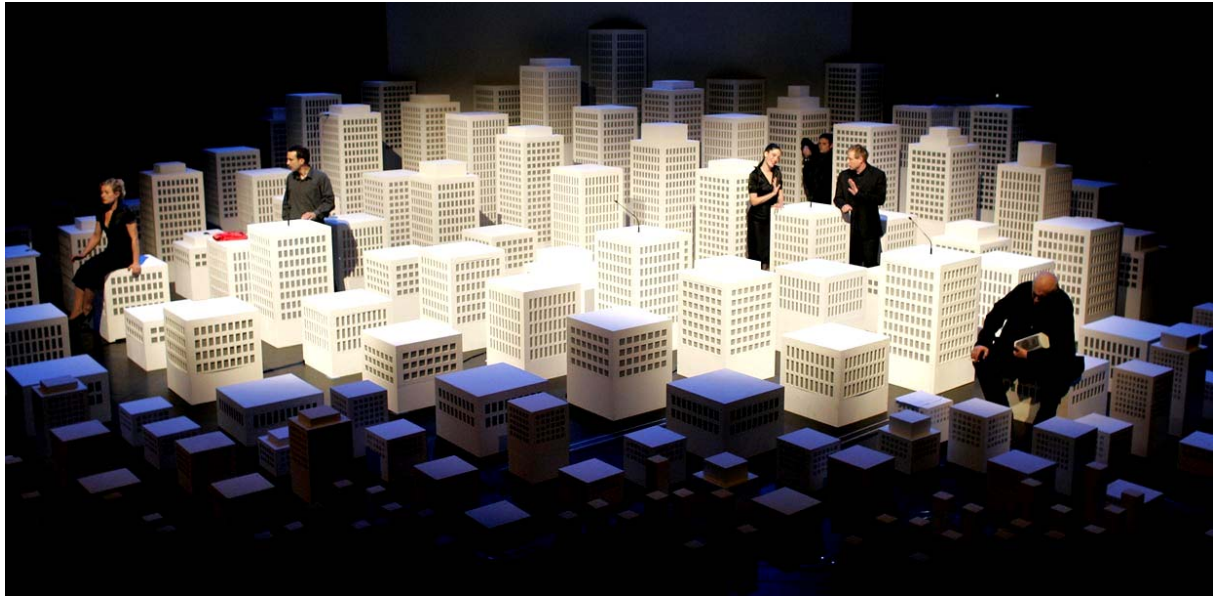
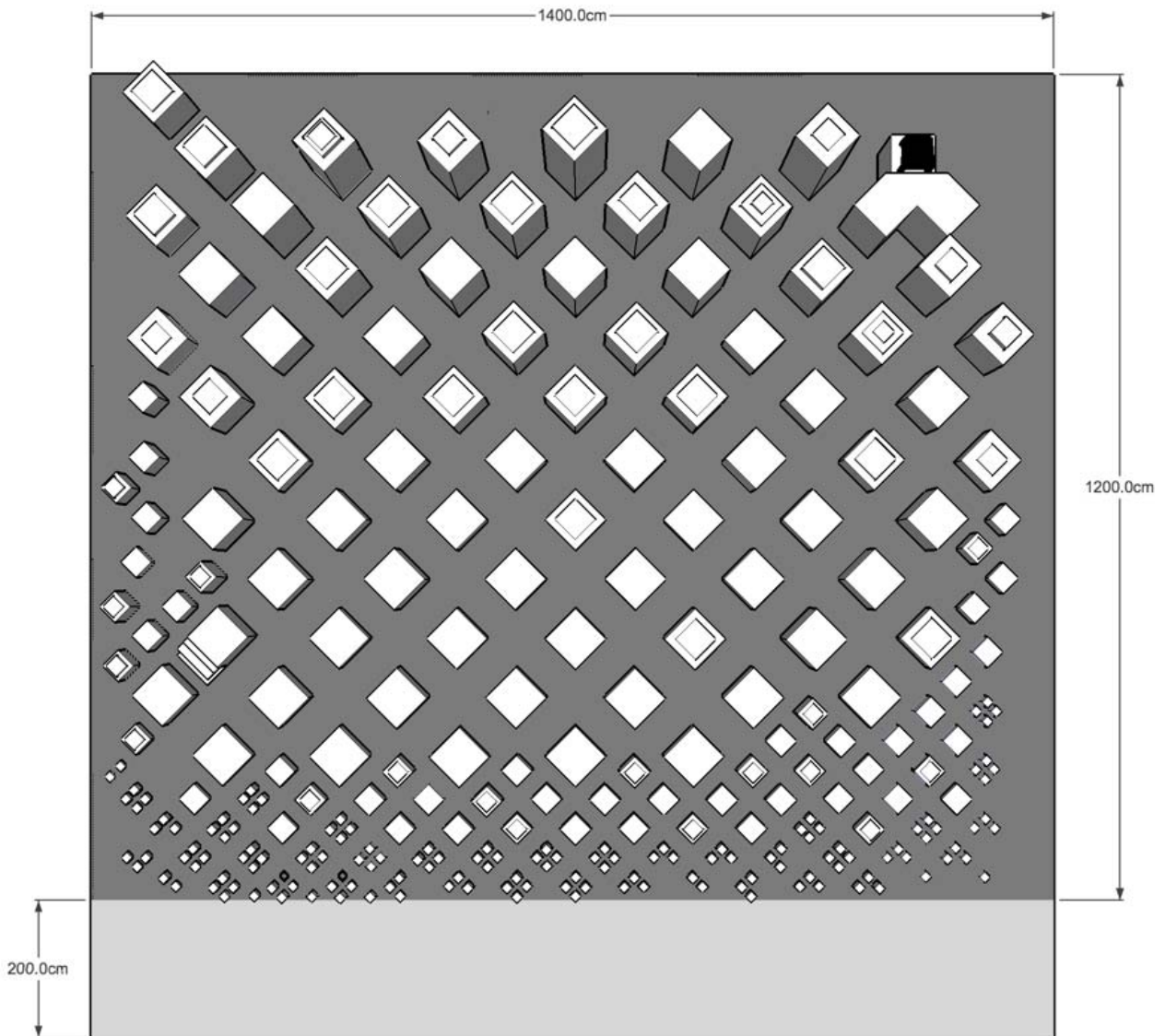
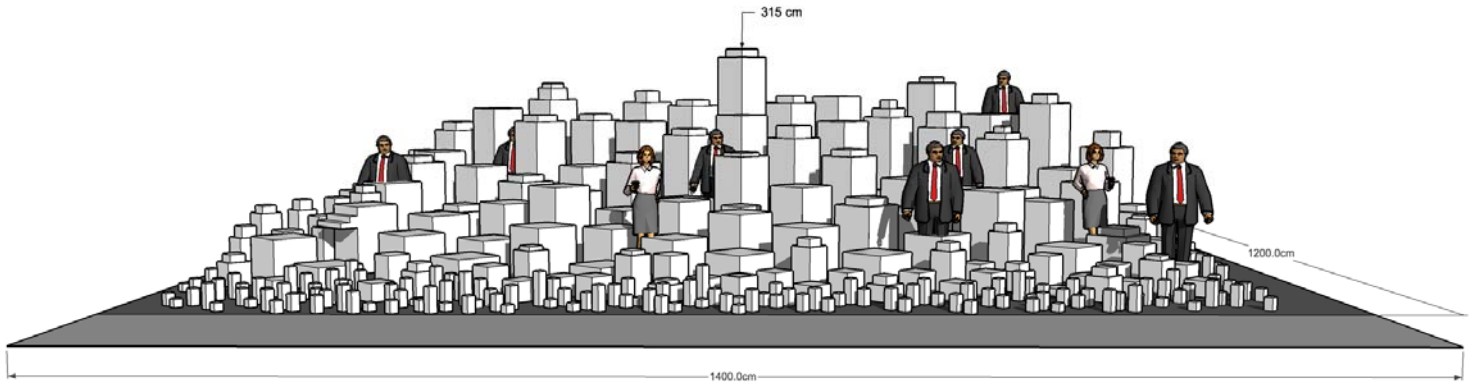


WALK DON'T WALK TECHNICAL RIDER



WALK DON'T WALK TECHNICAL RIDER



PODESTERIE



WALK DON'T WALK TECHNICAL RIDER

LIGHT

Contact:: Patrik Riehmann
 patrik@superboards.ch
 +41 78 8034678

Stage	Host	Plasma
The Stage must be at minimum 14.6 meter width and 12.5 meter depth	X	
Black box with curtains	X	

Light	Host	Plasma
Fresnel 5 KW	4	
PC 2 KW	5	
PC 1 KW	16	
Robert Juliat 711 SX2, 8 - 16°	1	
ETC S4 575/750 W, 25 - 50°	12	
Par 64 1 KW, CP62	2	

Specials	Host	Plasma
High End Studio Spot 250		1
Follow Spot (a silent one, placed near the light desk)	1	

Gellist	Quantity	Gel LEE
Fresnel 5 KW	1	204
Fresnel 5 KW	1	200
PC 2 KW	1	Rosco 27
PC 1 KW	10	079
PC 1 KW	4	200
PC 1 KW	2	203
ETC S4	5	202
ETC S4	5	075
Par64	1	202

Additional light information

We need a programmable lighting desk, which is Moving Light compatible

We need 15 dimmer channels on the floor.

We need 3 direct power plugs for the lights on the floor.

We bring the following gels: 075, 079, Rosco 27

The Audience Light is not included in this Rider.



WALK DON'T WALK TECHNICAL RIDER

SOUND

Contact:: Martin Wigger
 staubsauger@spezialmaterial.ch
 +41 79 6042236

PA-System

- 1 professionell stereo PA system with sub basses
 - 2 tops from the back of the stage-setup
 - 2 tops front of stage

- 1 12/2 Channel Multicore with Stagebox on stage
- 1 Mixing console - 16 channel (6 channels with phantompower)
 - good eq's
 - 3 aux send

- 2 wireless Mic SM58
- 2 230V/10A Powerplug for Soundequipment on stage
- 1 System technician
- 5 XLR-cables 5m
- 10 XLR-cables 10m
- 10 XLR-cables 5m

channel list

Ch.	Instrument	Typ Mic	Special's	Position
1	Jan Left	Lineout		Stage Jan
2	Jan Right	Lineout		Stage Jan
3	Mic Sennheiser (Plasma)	Sennheiser Com1324	Phantompower	Stage W1
4	Mic Sennheiser (Plasma)	Sennheiser Com1324	Phantompower	Stage S1
5	Mic Sennheiser (Plasma)	Sennheiser Com1324	Phantompower	Stage S2
6	Mic Sennheiser (Plasma)	Sennheiser Com1324	Phantompower	Stage S3
7	Mic Sennheiser (Plasma)	Sennheiser Com1324	Phantompower	Stage S4
8	Grenzflächen-Mic (Plasma)	Audio-Technica ATM87R	Phantompower	Stage
9	Martin back left	Lineout sym. (Audiointerface)		Stage Martin
10	Martin Back right	Lineout sym. (Audiointerface)		Stage Martin
11	Martin Front left	Lineout sym. (Audiointerface)		Stage Martin
12	Martin Front right	Lineout sym. (Audiointerface)		Stage Martin
13	SM58 Wireles Mic			Foh
14	SM58 Wireles Mic			Foh
15	T.C. M300 Reverb (Plasma)	Lineout		Foh
16	T.C. M300 Reverb (Plasma)	Lineout		Foh